

# Wood End Primary School

## Class plan - Hedgehog Class Cycle A



## Childhood **History**

### Companions

- Our Wonderful World **Geography**
- Shade and Shelter **Design and technology**
- Mix It (Y1) **Art and design**
- Funny Faces and Fabulous Features **Art and design**
- Everyday Materials **Science**
- Human Senses **Science**

### Planned term

Autumn

### Visits

Wizard of Oz on Ice

### Power of Reading

Wild Grace and family

### Suggested text

Wilfrid Gordon McDonald Partridge – Mem Fox. [Our Wonderful World] - Here We Are - Oliver Jeffers

### Memorable experience

Childhood past and present. [Shade and Shelter] - Investigating shelters. [Funny Faces and Fabulous Features] - Exploring portraits

### Innovate challenge

Childhood knowledge organisers. [Our Wonderful World] - Geographical enquiry. [Shade and Shelter] - Designing and building a play den. [Mix It (Y1)] - Colour challenge. [Funny Faces and Fabulous Features] - Collage creators. [Everyday Materials] - Let's investigate focus: Observing, measuring and recording

### English

Autobiographies; Non-chronological reports; Riddles

### Religious education

Milad un Nabi Diwali

### Geography

Settlements; Changes over time. [Our Wonderful World] - Physical and human features; Picture maps; Cardinal compass points; Equator and hemispheres; Continents; Oceans; Countries and capital cities of the UK; Protecting natural environments; Fieldwork

### Physical Education

Fitness Fundamentals Gymnastics Yoga

### Computing

Online safety Grouping and sorting (maths) Pictograms

### Art and design

[Mix It (Y1)] - Colour theory; Colour wheel; Primary and secondary colours. [Funny Faces and Fabulous Features] - Portraiture; Collage

### RSHE

Being safe 1 Mental wellbeing 1 Different roles of people and families Protective behaviours

### Design and technology

[Shade and Shelter] - Investigating existing products; Designing and making shelters and dens; Prototypes; Safety rules; Materials. [Funny Faces and Fabulous Features] - Stitching to join materials; Embellishing

### History

Historical vocabulary; Historical artefacts; Timelines; Everyday life and childhood in the 1950s; Significant events – Queen's coronation; Enquiry

### Mathematics

Number and place value Addition and subtraction Shape

### Music

Introducing beat Rhythm and Pitch

### Personal, social and health education

Stages of life; Changes

### Science

[Shade and Shelter] - Naming everyday materials; Properties and uses of materials. [Everyday Materials] - Materials; Natural materials; Human-made materials; Grouping materials; Properties of materials; Venn diagrams; Comparing and testing materials; Working scientifically – Identifying and classifying, Observing changes over time, Comparative test, Pattern seeking, Research



## Y1 WRM – Autumn (v3.0) **Mathematics**

**Mathematics**

Block 1: Number – Place value; Block 2: Number – Addition and subtraction; Block 3: Geometry – Shape



## Our Wonderful World **Geography**

**Suggested text**

Here We Are - Oliver Jeffers

**Innovate challenge**

Geographical enquiry

**Geography**

Physical and human features; Picture maps; Cardinal compass points; Equator and hemispheres; Continents; Oceans; Countries and capital cities of the UK; Protecting natural environments; Fieldwork



## Shade and Shelter **Design and technology**

**Memorable experience**

Investigating shelters

**Innovate challenge**

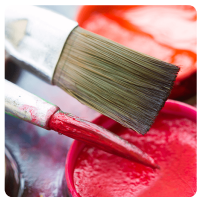
Designing and building a play den

**Design and technology**

Investigating existing products; Designing and making shelters and dens; Prototypes; Safety rules; Materials

**Science**

Naming everyday materials; Properties and uses of materials



## Mix It (Y1) **Art and design**

**Innovate challenge**

Colour challenge

**Art and design**

Colour theory; Colour wheel; Primary and secondary colours



## Funny Faces and Fabulous Features **Art and design**

**Memorable experience**

Exploring portraits

**Innovate challenge**

Collage creators

**Art and design**

Portraiture; Collage

**Design and technology**

Stitching to join materials; Embellishing



## Everyday Materials Science

### Innovate challenge

Let's investigate focus: Observing, measuring and recording

### Science

Materials; Natural materials; Human-made materials; Grouping materials; Properties of materials; Venn diagrams; Comparing and testing materials; Working scientifically – Identifying and classifying, Observing changes over time, Comparative test, Pattern seeking, Research



## Human Senses Science



## Bright Lights, Big City Geography

### Planned term

Spring

### Visits

Purim workshop

### Power of Reading

The Dark Lila and the Secret of Rain

### Suggested text

Topsy and Tim Visit London – Jean and Gareth Adamson

### Memorable experience

Local landmarks - Tamworth castle

### Innovate challenge

Marley's trip to London

### English

Postcards; Directions; Adventure narratives

### Religious education

Harvest Purim

### Geography

Local landmarks; Countries and capital cities of the UK; Physical features of the UK; Settlements; Human features; Weather and seasons; London – a capital city; Landmarks; Aerial images; Maps; Directions – locational and directional language; Geographical similarities and differences

### Physical Education

Target games Sending and receiving Ball skills Team building

### Computing

Searching the web; Algorithms; Logical reasoning; Programming; Common uses of information technology

### Art and design

Drawing

### RSHE

Families and People who care 1 Respectful relationships 2 Rules - looking after others Caring for local environment Jobs in the community

### History

Significant event – Great Fire of London

### Mathematics

Place value Addition and subtraction Length and Height Mass and volume

### Music

Tempo and dynamics Combining pulse, rhythm and pitch

### Personal, social and health education

Speaking, listening and sharing



## Y1 WRM – Spring (v3.0) Mathematics

### Mathematics

Block 1: Number – Place value; Block 2: Number – Addition and subtraction; Block 3: Number – Place value; Block 4: Measurement – Length and height; Block 5 – Measurement – Mass and volume



## Taxi! **Design and technology**

### Memorable experience

Investigating wheels, axles and chassis

### Innovate challenge

Making a London taxi

### Design and technology

Mechanisms – wheels, axles and chassis



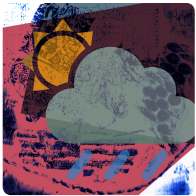
## Seasonal Changes **Science**

### Innovate challenge

Let's investigate focus: Asking and answering questions

### Science

Seasons; Seasonal changes in deciduous and evergreen trees; Seasonal changes in animals; Weather; Seasonal weather; Day length; Investigating the Sun; Measuring wind; Measuring temperature; Measuring precipitation; Weather forecasting; Working scientifically – Observing changes over time, Identifying and classifying, Pattern seeking, Comparative test, Research



## Rain and Sunrays **Art and design**

### Memorable experience

Weather motifs

### Innovate challenge

Creating weather collagraphs

### Art and design

Motifs; Line and shape; Texture; Collagraphy



## School Days **History**

### Companions

- Street View **Art and design**
- Chop, Slice and Mash **Design and technology**
- Plant Parts **Science**
- Animal Parts **Science**

### Planned term

Summer

### Visits

The Children's Country House at Sudbury

### Power of Reading

The lonely beast Rapunzel

### Suggested text

Whiffy Wilson: The Wolf who wouldn't go to school – Caryl Hart

### Memorable experience

Our school's history. [Street View] - Exploring street views. [Chop, Slice and Mash] - Investigating sources of food

### Innovate challenge

Planning an assembly. [Street View] - Mural makers. [Chop, Slice and Mash] - Designing and making a supermarket sandwich. [Plant Parts] - Let's investigate focus: Reporting and concluding. [Animal Parts] - Let's investigate focus: Observing, measuring and recording

### English

List poems; Diaries; Letters

### Religious education

Naam Karan Esala Perahera

### Geography

Fieldwork; Human and physical features; Maps; Local environment; Changes over time

### Physical Education

Dance Invasion Athletics Net and wall

### Computing

Coding Maze explorers

### Art and design

[Street View] - 3-D murals; Buildings; Significant people – James Rizzi

### RSHE

Keeping healthy - food and exercise Sun safety What makes us unique Feelings

### Design and technology

[Chop, Slice and Mash] - Sources of food; Food preparation techniques; Hygiene rules; Designing and making salads and sandwiches

### History

Historical vocabulary; Historical artefacts; Timelines; Present day schools; Our school; Victorian era; Victorian schools; Significant people – Samuel Wilderspin

### Mathematics

Multiplication and Division Fractions Position and direction Place Value Money Time

### Music

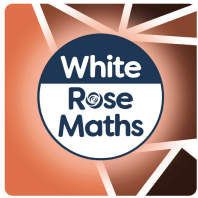
Improvisation Sound and create a story

### Personal, social and health education

Special people; Positive contributions

### Science

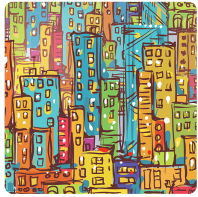
[Plant Parts] - Wild and garden plants; Seasonal changes; Plant parts; Seeds and bulbs; Investigating leaves; Importance of plants; Working scientifically – Identifying and classifying, Observing changes over time, Pattern seeking, Research, Comparative test. [Animal Parts] - Animals' body parts; Animal groups – amphibians, birds, fish, invertebrates, mammals, reptiles; Carroll and Venn diagrams; Pets; Carnivores, herbivores and omnivores; Earthworms; Working scientifically – Identifying and classifying, Comparative test, Pattern seeking, Research



## Y1 WRM – Summer (v3.0) **Mathematics**

### Mathematics

Block 1: Number – Multiplication and division; Block 2: Number – Fractions; Block 3: Geometry – Position and direction; Block 4: Number – Place value (within 100); Block 5 – Measurement – Money; Block 6 – Measurement – Time



## Street View **Art and design**

### Memorable experience

Exploring street views

### Innovate challenge

Mural makers

### Art and design

3-D murals; Buildings; Significant people – James Rizzi



## Chop, Slice and Mash **Design and technology**

### Memorable experience

Investigating sources of food

### Innovate challenge

Designing and making a supermarket sandwich

### Design and technology

Sources of food; Food preparation techniques; Hygiene rules; Designing and making salads and sandwiches



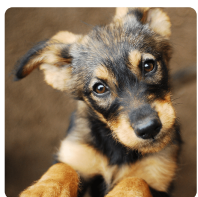
## Plant Parts **Science**

### Innovate challenge

Let's investigate focus: Reporting and concluding

### Science

Wild and garden plants; Seasonal changes; Plant parts; Seeds and bulbs; Investigating leaves; Importance of plants; Working scientifically – Identifying and classifying, Observing changes over time, Pattern seeking, Research, Comparative test



## Animal Parts **Science**

### Innovate challenge

Let's investigate focus: Observing, measuring and recording

### Science

Animals' body parts; Animal groups – amphibians, birds, fish, invertebrates, mammals, reptiles; Carroll and Venn diagrams; Pets; Carnivores, herbivores and omnivores; Earthworms; Working scientifically – Identifying and classifying, Comparative test, Pattern seeking, Research



## Y1 Computing **Computing**

### Computing

Staying safe online; Algorithms; Programming and debugging; Using data





## Esala Perahera Religious education

### Memorable experience

Imaginary trip to Sri Lanka

### Innovate challenge

Exploring remembering and memories

### Religious education

Buddha; Sacred places; Memories and remembering



## Harvest Religious education

### Memorable experience

Making crumble

### Innovate challenge

Thinking about sharing

### Religious education

Harvest; Sharing



## Purim Religious education

### Memorable experience

Make some noise

### Innovate challenge

Thinking about gifts

### Religious education

Special clothes; Story of Esther; Purim customs; Gifts



## Milad un Nabi Religious education

### Memorable experience

Birthday celebrations

### Innovate challenge

Thinking about leadership

### Religious education

Muhammad; The first Muslim; Leadership



## Diwali Religious education

### Memorable experience

Making diva lamps

### Innovate challenge

Exploring good luck

### Religious education

Diva lamps; New beginnings; Diwali traditions; Luck



## Naam Karan Religious education

### Memorable experience

Nursery role play

### Innovate challenge

Exploring family

### Religious education

Gurdwara; Guru Granth Sahib; Naming ceremony; Families