



# Wood End Primary School

## Class plan - Owl 2025 Cycle B



### Childhood **History**

#### Companions

- Everyday Materials **Science**
- Human Senses **Science**
- Our Wonderful World **Geography**
- Shade and Shelter **Design and technology**
- Mix It (Y1) **Art and design**
- Funny Faces and Fabulous Features **Art and design**

#### Planned term

Autumn

#### Suggested text

Wilfrid Gordon McDonald Partridge – Mem Fox

#### Memorable experience

Childhood past and present

#### Innovate challenge

Childhood knowledge organisers

#### Computing

Internet safety - SMART Computer systems and networks - technology around us Creating media - digital painting

#### Music

Keeping the Pulse - My favourite things Tempo - Snail and Mouse

#### History

Historical vocabulary; Historical artefacts; Timelines; Everyday life and childhood in the 1950s; Significant events – Queen's coronation; Enquiry

#### English

Autobiographies; Non-chronological reports; Riddles Where The Wild Things Are The Lonely Beast The Robot and the Bluebird Mr Underbed

#### Geography

Settlements; Changes over time

#### Personal, social and health education

Stages of life; Changes Families, roles of different people Protective behaviours Seeking permission How behaviour affects others

#### RE

K1.1 - How might your religion or worldview be seen in the choices you make?

#### PE

Fitness Fundamentals Yoga Gymnastics



# School Days

History

Companions

- Plant Parts Science
- Animal Parts Science
- Chop, Slice and Mash Design and technology
- Street View Art and design

Planned term

Summer

Suggested text

Whiffy Wilson: The Wolf who wouldn't go to school – Caryl Hart

Memorable experience

Our school's history

Innovate challenge

Planning an assembly

Computing

Creating media - digital writing Programming B - Programming animations

Music

Pitch - Superheroes Musical Symbols - Under the sea

History

Historical vocabulary; Historical artefacts; Timelines; Present day schools; Our school; Victorian era; Victorian schools; Significant people – Samuel Wilderspin

English

List poems; Diaries; Letters The Jolly Postman Traditional tales Letter to new teacher

Geography

Fieldwork; Human and physical features; Maps; Local environment; Changes over time

Personal, social and health education

Special people; Positive contributions Caring for the environment Healthy food and exercise Sun safety What makes us unique Rules and age restrictions to keep us safe

RE

K1.3 How do people with similar religion and worldviews share and celebrate their beliefs

PE

Dance Invasion Net and Wall Athletics



# Everyday Materials

Science

Planned term

Autumn

Innovate challenge

Let's investigate focus: Observing, measuring and recording

Science

Materials; Natural materials; Human-made materials; Grouping materials; Properties of materials; Venn diagrams; Comparing and testing materials; Working scientifically – Identifying and classifying, Observing changes over time, Comparative test, Pattern seeking, Research



# Human Senses

Science

**Planned term**  
Autumn

**Innovate challenge**  
Let's investigate focus: Planning and carrying out

**Science**  
Humans; Labelling body parts; Counting body parts; Similarities and differences in humans; Five senses – sight, hearing, touch, smell, taste; Senses and danger; Sensory loss and assistive tools; Sense of touch investigation; Working scientifically – Identifying and classifying, Comparative test, Pattern seeking, Research



# Seasonal Changes

Science

**Planned term**  
Spring

**Innovate challenge**  
Let's investigate focus: Asking and answering questions

**Science**  
Seasons; Seasonal changes in deciduous and evergreen trees; Seasonal changes in animals; Weather; Seasonal weather; Day length; Investigating the Sun; Measuring wind; Measuring temperature; Measuring precipitation; Weather forecasting; Working scientifically – Observing changes over time, Identifying and classifying, Pattern seeking, Comparative test, Research



# Plant Parts

Science

**Planned term**  
Summer

**Innovate challenge**  
Let's investigate focus: Reporting and concluding

**Science**  
Wild and garden plants; Seasonal changes; Plant parts; Seeds and bulbs; Investigating leaves; Importance of plants; Working scientifically – Identifying and classifying, Observing changes over time, Pattern seeking, Research, Comparative test



# Animal Parts

Science

**Planned term**  
Summer

**Innovate challenge**  
Let's investigate focus: Observing, measuring and recording

**Science**  
Animals' body parts; Animal groups – amphibians, birds, fish, invertebrates, mammals, reptiles; Carroll and Venn diagrams; Pets; Carnivores, herbivores and omnivores; Earthworms; Working scientifically – Identifying and classifying, Comparative test, Pattern seeking, Research



# Our Wonderful World

Geography

**Planned term**

Autumn

**Suggested text**

Here We Are - Oliver Jeffers

**Innovate challenge**

Geographical enquiry

**Geography**

Physical and human features; Picture maps; Cardinal compass points; Equator and hemispheres; Continents; Oceans; Countries and capital cities of the UK; Protecting natural environments; Fieldwork



# Bright Lights, Big City

Geography

**Companions**

- Rain and Sunrays

Art and design

**Planned term**

Spring

**Art and design**

Drawing

**Suggested text**

Topsy and Tim Visit London – Jean and Gareth Adamson Katie in London

**Memorable experience**

Local landmarks

**Innovate challenge**

Marley's trip to London

**Computing**

Programming A - Moving a robot Data and information - grouping data

**Music**

Dynamics - Seaside Sound patterns - Fairytales

**History**

Significant event – Great Fire of London

**English**

Postcards; Directions; Adventure narratives The Snail and the Whale The Dark Wild Traditional Tales

**Geography**

Local landmarks; Countries and capital cities of the UK; Physical features of the UK; Settlements; Human features; Weather and seasons; London – a capital city; Landmarks; Aerial images; Maps; Directions – locational and directional language; Geographical similarities and differences

**Personal, social and health education**

Speaking, listening and sharing Using the internet safely and communicating online Strengths and interests Jobs in the community Respectful relationships similarities and differences

**RE**

K1.2 - Where do people turn to for guidance in their life?

**PE**

Target games Team building sending and receiving Ball skills



# Shade and Shelter

Design and technology

**Planned term**

Autumn

**Memorable experience**

Investigating shelters

**Innovate challenge**

Designing and building a play den

**Design and technology**

Investigating existing products; Designing and making shelters and dens; Prototypes; Safety rules; Materials

**Science**

Naming everyday materials; Properties and uses of materials



# Taxi!

Design and technology

**Planned term**

Spring

**Memorable experience**

Investigating wheels, axles and chassis

**Innovate challenge**

Making a London taxi

**Design and technology**

Mechanisms – wheels, axles and chassis



# Chop, Slice and Mash

Design and technology

**Planned term**

Summer

**Memorable experience**

Investigating sources of food

**Innovate challenge**

Designing and making a supermarket sandwich

**Design and technology**

Sources of food; Food preparation techniques; Hygiene rules; Designing and making salads and sandwiches



# Mix It (Y1)

Art and design

**Planned term**

Autumn

**Art and design**

Colour theory; Colour wheel; Primary and secondary colours

**Innovate challenge**

Colour challenge



# Funny Faces and Fabulous Features

Art and design

**Planned term**

Autumn

**Art and design**

Portraiture; Collage

**Memorable experience**

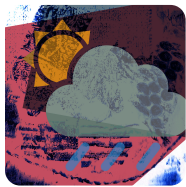
Exploring portraits

**Innovate challenge**

Collage creators

**Design and technology**

Stitching to join materials; Embellishing



# Rain and Sunrays

Art and design

**Planned term**

Spring

**Art and design**

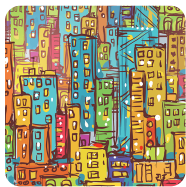
Motifs; Line and shape; Texture; Collagraphy

**Memorable experience**

Weather motifs

**Innovate challenge**

Creating weather collagraphs



# Street View

Art and design

**Planned term**

Summer

**Art and design**

3-D murals; Buildings; Significant people – James Rizzi

**Memorable experience**

Exploring street views

**Innovate challenge**

Mural makers

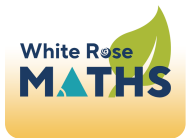


# Y1 WRM – Autumn (v3.0)

Mathematics

**Mathematics**

Block 1: Number – Place value; Block 2: Number – Addition and subtraction; Block 3: Geometry – Shape



# Y1 WRM – Spring (v3.0)

Mathematics

**Mathematics**

Block 1: Number – Place value; Block 2: Number – Addition and subtraction; Block 3: Number – Place value; Block 4: Measurement – Length and height; Block 5 – Measurement – Mass and volume



# Y1 WRM – Summer (v3.0)

Mathematics

**Mathematics**

Block 1: Number – Multiplication and division; Block 2: Number – Fractions; Block 3: Geometry – Position and direction; Block 4: Number – Place value (within 100); Block 5 – Measurement – Money; Block 6 – Measurement – Time

Block 1: Number – Multiplication and division; Block 2: Number – Fractions; Block 3: Geometry – Position and direction; Block 4: Number – Place value (within 100); Block 5 – Measurement – Money; Block 6 – Measurement – Time