

Wood End Primary School

Class plan - Dragonfly Class Cycle A



Movers and Shakers History

Companions

- Let's Explore the World Geography
- Mix It (Y2) Art and design
- Still Life Art and design
- Remarkable Recipes Design and technology
- Human Survival Science
- Habitats Science

Planned term

Autumn one /two

Suggested text

Rosa Parks (Little People, Big Dreams) – Lisbeth Kaiser. [Let's Explore the World] - Collins First Atlas - Collins Kids

Memorable experience

Studying a local historically significant person. [Still Life] - Gallery visit. [Remarkable Recipes] - Exploring where food comes from

Innovate challenge

Significant individual presentation. [Let's Explore the World] - Geographical enquiry. [Mix It (Y2)] - Colour challenge. [Still Life] - Still life artists. [Remarkable Recipes] - Making a new school meal

Literacy

Snail and the Whale, Claude in the City

English

Biographies; Newspaper reports; Persuasive posters; Speeches

Religious education

Navaratri Christmas

Geography

Historical landmarks; Significant places. [Let's Explore the World] - Using an atlas; Using a compass; Using map keys; Locating the equator, Northern and Southern Hemispheres and North and South Poles; Hot, temperate and cold places; Comparing England to Somalia; Sustainability; Fieldwork

Computing

Online safety

Art and design

[Mix It (Y2)] - Colour theory; Colour wheel; Primary and secondary colours. [Still Life] - Still life; Colour study; Compositions

Personal, social and emotional development

Being safe 1 Mental wellbeing 1 Different roles of people and families Protective behaviours

Design and technology

[Remarkable Recipes] - Sources of food; Kitchen tools; Reading recipes; Hygiene rules; Making a school meal

History

Historical models; Exploring significance; Local historically significant person; Historical vocabulary; Chronology and timelines; Historically significant artists, activists, explorers, monarchs and scientists; Facts and opinions; Memorials; Significant people – Captain James Cook, Christopher Columbus, Claude Monet, Elizabeth Fry, Emmeline Pankhurst, Florence Nightingale, Henry VIII, Isaac Newton, Joseph Lister, Mahatma Gandhi, Marie Curie, Martin Luther King Jr, Mary Anning, Neil Armstrong, Paul Cezanne, Queen Victoria, Roald Amundsen, Rosa Parks, Vasco da Gama, Vincent van Gogh, William Shakespeare

Mathematics

Place Value Addition and subtraction Shape

Music

Exploring simple patterns Tempo

Personal, social and health education

Modern day significant people

Science

Humans survival Human needs for health and survival; Healthy lifestyle; Bodily hygiene routines; Handwashing investigation; How germs spread; Working scientifically – Identifying and classifying, Observing changes over time, Comparative test, Pattern seeking, Research Habitats habitats and what a habitat needs to provide. They explore local

habitats to identify and name living things and begin to understand how they depend on one another for food and shelter.

Physical education

Fitness Fundamentals Gymnastics Yoga



Y2 WRM – Autumn (v3.0) **Mathematics**

Mathematics

Block 1: Number – Place value; Block 2: Number – Addition and subtraction; Block 3: Geometry – Shape



Let's Explore the World **Geography**

Suggested text

Collins First Atlas - Collins Kids

Innovate challenge

Geographical enquiry

Geography

Using an atlas; Using a compass; Using map keys; Locating the equator, Northern and Southern Hemispheres and North and South Poles; Hot, temperate and cold places; Comparing England to Somalia; Sustainability; Fieldwork



Mix It (Y2) **Art and design**

Innovate challenge

Colour challenge

Art and design

Colour theory; Colour wheel; Primary and secondary colours



Still Life **Art and design**

Memorable experience

Gallery visit

Innovate challenge

Still life artists

Art and design

Still life; Colour study; Compositions



Remarkable Recipes **Design and technology**

Memorable experience

Exploring where food comes from

Innovate challenge

Making a new school meal

Design and technology

Sources of food; Kitchen tools; Reading recipes; Hygiene rules; Making a school meal



Human Survival Science



Habitats Science



Coastline **Geography**

Companions

- Beach Hut **Design and technology**
- Flower Head **Art and design**
- Uses of Materials **Science**
- Plant Survival **Science**

Planned term

Spring one/two

Suggested text

Katie Morag and the New Pier - Mairi Hedderwick. [Plant Survival] - The Tiny Seed - Eric Carle

Memorable experience

Coastal visit. [Beach Hut] - Investigating beach huts. [Flower Head] - Flowers and flower art

Innovate challenge

My coastal town. [Beach Hut] - Making a beach hut. [Flower Head] - Creating flower sculptures. [Uses of Materials] - Let's investigate focus: Asking and answering questions. [Plant Survival] - Let's investigate focus: Observing, measuring and recording

Literacy

Diary of a Killer Cat The secret of Black rock

English

Descriptions; Adventure narratives; Non-chronological reports; Persuasive writing

Religious education

Hanukkah Loser

Geography

Maps, globes and atlases; World seas and oceans; Human and physical features; Locational language; Compass directions; Physical processes – erosion; Changes over time; Tourism

Computing

Searching the web; Algorithms

Art and design

Materials and techniques. [Flower Head] - Analysing artwork; Exploring visual elements – colour, shape, form, texture and pattern; Significant artist – Yayoi Kusama; Drawing; Printmaking; 3-D forms

Personal, social and emotional development

Families and people who care Respectful relationships Jobs in the community

Design and technology

[Beach Hut] - Structures – strengthening and joining

History

Jobs in the past; Significant people – Captain Cook

Mathematics

Money Multiplication and Division Length and height. Mass, Capacity and temperature

Music

Sea shanties Exploring feelings through music Musical stories

Personal, social and health education

Special people; Staying safe; Strengths and goals

Science

[Uses of Materials] - Identifying materials and their properties; Shaping materials; Uses of materials; Linking properties to use; Sustainability and recycling; Working scientifically – Identifying and classifying, Pattern seeking, Comparative tests, Research. [Plant Survival] - Plant parts; Seasonal changes in plants; Investigating germination; Investigating plant growth; Unusual plants; Working scientifically – Observing changes over time, Identifying and classifying, Pattern seeking, Comparative test, Research

Physical education

Target games Sending and receiving Ball skills Team building



Y2 WRM – Spring (v3.0) **Mathematics**

Mathematics

Block 1: Measurement – Money; Block 2: Number – Multiplication and division; Block 3: Measurement – Length and height; Block 4: Measurement – Mass, capacity and temperature



Beach Hut **Design and technology**

Memorable experience

Investigating beach huts

Innovate challenge

Making a beach hut

Design and technology

Structures – strengthening and joining



Flower Head **Art and design**

Memorable experience

Flowers and flower art

Innovate challenge

Creating flower sculptures

Art and design

Analysing artwork; Exploring visual elements – colour, shape, form, texture and pattern; Significant artist – Yayoi Kusama; Drawing; Printmaking; 3-D forms



Uses of Materials **Science**

Innovate challenge

Let's investigate focus: Asking and answering questions

Science

Identifying materials and their properties; Shaping materials; Uses of materials; Linking properties to use; Sustainability and recycling; Working scientifically – Identifying and classifying, Pattern seeking, Comparative tests, Research



Plant Survival **Science**

Suggested text

The Tiny Seed - Eric Carle

Innovate challenge

Let's investigate focus: Observing, measuring and recording

Science

Plant parts; Seasonal changes in plants; Investigating germination; Investigating plant growth; Unusual plants; Working scientifically – Observing changes over time, Identifying and classifying, Pattern seeking, Comparative test, Research



Magnificent Monarchs History

Companions

- Portraits and Poses Art and design
- Cut, Stitch and Join Design and technology
- Animal Survival Science
- Push and Pull Design and technology

Planned term

Summer one/two

Suggested text

Queen Victoria's Bathing Machine – Gloria Whelan

Memorable experience

English and British monarchy timeline. [Portraits and Poses] - Analysing paintings. [Cut, Stitch and Join] - Everyday fabric products. [Push and Pull] - Machines and mechanisms

Innovate challenge

Magnificent Monarchs board game. [Portraits and Poses] - Royal portraits. [Cut, Stitch and Join] - Designing and making a bag tag. [Animal Survival] - Let's investigate focus: Planning and carrying out. [Push and Pull] - Designing and making a moving greetings card

Literacy

Olga De Polga The King who banned the dark

English

Information leaflets; Kennings poems; Comic strips

Religious education

Jumu'ah Anand Karaj

Geography

Significant places – royal residences

Computing

[Portraits and Poses] - Art software; Photography; Photo editing Coding

Art and design

[Portraits and Poses] - Portraiture; Royal portraits; Sketching; Digital artwork

Personal, social and emotional development

Keeping healthy - food and exercise Sun safety What makes us unique Feelings

Design and technology

[Cut, Stitch and Join] - Everyday fabric products; Significant designer – Cath Kidston; Sewing patterns; Running stitch; Adding embellishments; Designing and making a bag tag. [Push and Pull] - Machines and mechanisms; Sliders, levers and linkages; Designing and making greetings cards with moving parts

History

Historical vocabulary; Historical periods; Timelines; Power and rule; Historical artefacts; Significant people - Alfred the Great, William the Conqueror; Henry VIII, Elizabeth I, Queen Victoria, Elizabeth II; Bayeux tapestry; Feudal system; Actions and impact; Historical models

Mathematics

Fractions Time Statics Position and direction.

Music

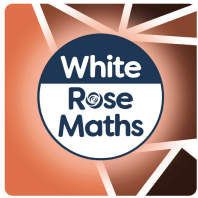
Music that makes you dance Exploring improvisation

Science

[Animal Survival] - Habitats; Invertebrates and invertebrate groups; Microhabitats; Animal needs for survival; Food chains; Human impact on habitats; Animal offspring; Lifecycles – amphibians, birds, invertebrates, mammals and reptiles; Seasonal changes in animals; Habitat improvements; Working scientifically – Identifying and classifying, Observing changes over time; Pattern seeking; Research

Physical education

Dance Invasion Athletics Net and wall



Y2 WRM – Summer (v3.0) **Mathematics**

Mathematics

Block 1: Number – Fractions; Block 2: Measurement – Time; Block 3: Statistics; Block 4: Geometry – Position and direction



Portraits and Poses **Art and design**

Memorable experience

Analysing paintings

Innovate challenge

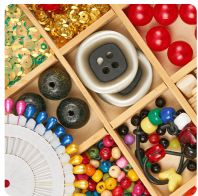
Royal portraits

Computing

Art software; Photography; Photo editing

Art and design

Portraiture; Royal portraits; Sketching; Digital artwork



Cut, Stitch and Join **Design and technology**

Memorable experience

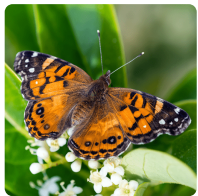
Everyday fabric products

Innovate challenge

Designing and making a bag tag

Design and technology

Everyday fabric products; Significant designer – Cath Kidston; Sewing patterns; Running stitch; Adding embellishments; Designing and making a bag tag



Animal Survival **Science**

Innovate challenge

Let's investigate focus: Planning and carrying out

Science

Habitats; Invertebrates and invertebrate groups; Microhabitats; Animal needs for survival; Food chains; Human impact on habitats; Animal offspring; Lifecycles – amphibians, birds, invertebrates, mammals and reptiles; Seasonal changes in animals; Habitat improvements; Working scientifically – Identifying and classifying, Observing changes over time; Pattern seeking; Research



Push and Pull **Design and technology**

Memorable experience

Machines and mechanisms

Innovate challenge

Designing and making a moving greetings card

Design and technology

Machines and mechanisms; Sliders, levers and linkages; Designing and making greetings cards with moving parts



Y2 Computing Computing

Computing

Staying safe online; Algorithms; Programming and debugging; Using data; Using computers



Losar Religious education

Memorable experience

New Year party

Innovate challenge

Thinking about the future

Religious education

New Year; Compassion; Thanks; The future



Christmas Religious education

Memorable experience

New baby visit

Innovate challenge

Exploring joy

Religious education

Christmas; Advent; Joy



Anand Karaj Religious education

Memorable experience

Marriage and weddings

Innovate challenge

Exploring love

Religious education

Marriage; Sikh weddings; Traditions and customs; Love



Hanukkah Religious education

Memorable experience

Lighting the candles

Innovate challenge

Exploring miracles

Religious education

Hanukkah traditions and customs; Hanukkiah; Miracles



Jumu'ah Religious education

Memorable experience

Friday prayers

Innovate challenge

Exploring worship

Religious education

Prayer; Features of mosques; Worship



Navratri Religious education

Memorable experience

Growing from seed

Innovate challenge

Thinking about celebrations

Religious education

Hindu gods; Navratri traditions; Celebration